

SCANNING INSTRUCTIONS

THE ICARUS MEDICAL APP

The Icarus Medical app is compatible with Apple iPhone X or newer. To download the app, scan the QR code.



SETTING UP

Locate an open and spacious area, where you will be able to clearly capture the necessary range of the knee. It is important to ensure that there is nothing in the immediate background that could be picked up in the scan.

We recommend that a chair be placed near the patient's opposite leg, providing them with an object to hold on to for stability during the scan. Ensure that the object is placed in a way that it does not interfere with the scan. Patients should wear shorts that fall around 9" above their knee for best results.



Figure 1. The Straight Shot should slide onto the top of the device and over the glass, with the mirror facing the rear.

Open the Icarus Medical app to access the scanning technology. Once you have the app ready, attach the Straight Shot device to the iPhone by sliding the curved edge of the device over the top of the front facing camera on the phone. You should be able to see the Icarus logo after installation (fig. 1). If the logo is visible, you have correctly installed the device.

GETTING INTO POSITION

Before beginning, ensure that you are positioned in front of the patient and toward the inside of the leg they are scanning. This will allow you to capture approximately 8" above and below the patients knee. This is very important! If you are unsure how much of the leg to capture in the scan, just remember that more is better!

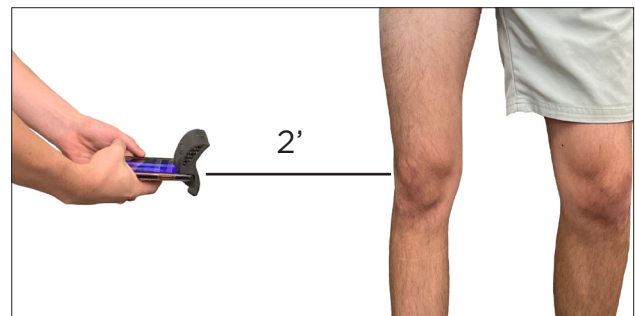


Figure 2. Maintaining a distance of at least two feet between the device and patients knee will provide the best scanning results.

The Straight Shot enables you to hold the phone horizontally, rather than vertically, allowing you to easily see what you are scanning in the mirror of the device (*fig. 2*). It is crucial that the patient remain completely still, feet shoulder-width apart, for the duration of the scan. The device should remain parallel with the ground throughout the entire scanning process.

SCANNING

1. The patient should stand with their leg straight through the scan. It is important that they are **bearing weight** on the leg as well. The scan should start from the inside of the leg with the device pointed at the center of the leg, parallel to the ground.
2. Press the circular button located at the bottom of the screen and wait until the countdown has finished before moving the phone around the leg from the inside toward the outside in a **slow, steady sweeping motion, keeping the phone level as you go.**
3. Ideally, you want to capture a full 360 degrees of the leg being scanned; however, **270 degrees** will typically provide enough information to accurately depict the curvature of the leg. When you are confident that you have **captured at least 270 degrees of their leg**, you can end the scan by pressing the circular button at the bottom of the screen.

Once the mesh has loaded and you can see that you have collected a clear, visible scan, press the save button located at the bottom of the screen. Select the scan that you would like to send to Icarus and tap the blue 'Send Scan' button.

It may take a few tries before you capture a quality scan, and that is completely okay! There is no limit to the number of scans you are permitted to take. It is best to take multiple scans, before deciding on the best one.

PHOTO

1. First, mark the center of the knee cap with an "X". This is an important step, as some individuals have a patella that is difficult to identify from the scan alone.
 2. Draw a line 5 ½ inches above the X, and another 5 ½ inches below.
- TIP:** Use a piece of paper folded in half to easily measure out 5 ½ inches
3. Take a photo of the front of the patient's knee, ensuring the X and both lines are square within the frame, and submit.

Complete the form, entering the patient's First Name, Last Name (identify which leg has been scanned and that a Straight Shot was used, by specifying 'LeftSS' or 'RightSS'), and email address (*fig. 4*).

After submission, you should receive a 'success' notification, verifying that we have received the scan!

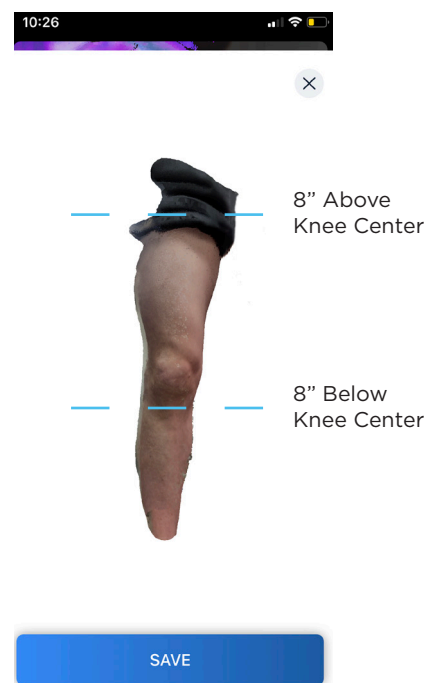


Figure 3. Example of a high quality scan.

← 2 of 2

Please fill out the form below.

First Name
Anna

Last Name
Smith (RightSS)

Email
anna@icarusmedical.com

Send Scan

Figure 4. Example of submission information.